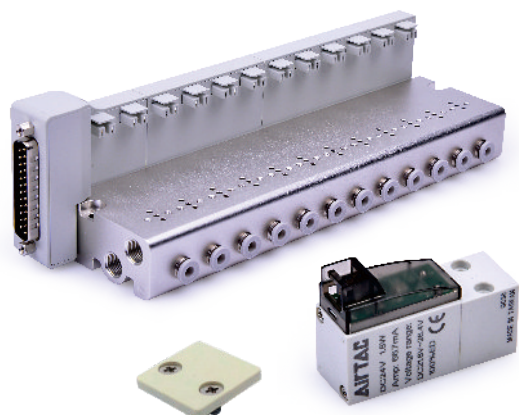


# Integrated solenoid valve (3/2 way)

CPV15S Series——Manifold, solenoid valve and blank plate



## Specification

| Model                         |                                | CPV15S   |
|-------------------------------|--------------------------------|--|
| Fluid                         |                                | Air(to be filtered by 40 μm filter element)              |
| Number of stations            |                                | 2 stations ~20 stations, only available in even stations |
| Electrical entry              |                                | Terminal, 25pin D-Sub                                    |
| Port size                     | P/R ports                      | 1/8" [Note1]   |
|                               | A Port                         | Φ4mm(Push in fittings)                                   |
| The type of Inlet and exhaust |                                | Centralized inlet and exhaust                            |
| Operating pressure            |                                | 0.15~0.8MPa(21~114psi)                                   |
| Proof pressure                |                                | 1.2MPa(175psi)   |
| Temperature                   |                                | -20~70℃  |
| Weight                        | Integrated valve of 2 stations | 158.5g(not include CPV15 valve)                          |
|                               | Increase when add 2 satations  | +97.65g  |
|                               | Blank plate kits               | 0.65g  |

[Note1] G thread is available.

## Product feature

1. Integrated installation centralizes air inlet, exhaust and power (25pin D-Sub)to save space and reduce additional accessories.
2. Flexible combination and expandability for various applications. Blank plates are optional.

## Ordering code

Ordering code for manifold

**CPV15S 20F G**

| ①Model  | ②Number of stations   | ③Thread type |
|---|---|--------------|
| CPV15S:<br>CPV15S series integrated olenoid valve | 2F: 2 stations<br>4F: 4 stations<br>6F: 6 stations<br>.....<br>20F: 20 stations | G: G         |

[Note] 1. Ordering code contains solenoid valve, manifold, and blank plate.  
2. Maximum station up to 20 stations.

Ordering code for valve

**CPV15 B P**

| ①Model                               | ②Voltage             | ③Code of manual override |
|--------------------------------------|----------------------|--------------------------|
| CPV: CPV series micro-solenoid valve | B: DC24V<br>F: DC12V | P: With manual override  |

Ordering code for blank plate

**P-CPV15S-R2**

| ①Model  | ②Code                        |
|---|------------------------------|
| CPV15S: CPV15S series integrated solenoid valve | R2: Blank plate for manifold |

[Note] Blank plate kits contains blank plate, gasket and screw.

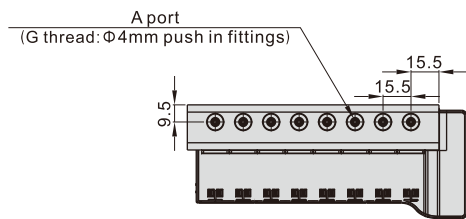
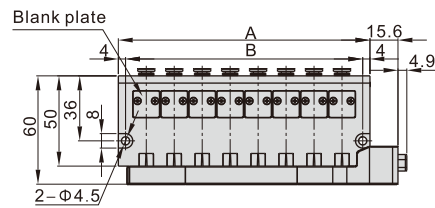
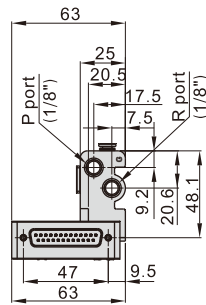
## Installation and Application

Please refer to the "Installation and Application " instruction of Integrated solenoid valve.

# Integrated solenoid valve (3/2 way)

CPV15S Series——Manifold, solenoid valve and blank plate

## Dimensions



| Item\Number of stations | 2F   | 4F   | 6F    | 8F    | 10F   | 12F   | 14F   | 16F   | 18F   | 20F   |
|-------------------------|------|------|-------|-------|-------|-------|-------|-------|-------|-------|
| A                       | 46.5 | 77.5 | 108.5 | 139.5 | 170.5 | 201.5 | 232.5 | 263.5 | 294.5 | 325.5 |
| B                       | 38.5 | 69.5 | 100.5 | 131.5 | 162.5 | 193.5 | 224.5 | 255.5 | 286.5 | 317.5 |