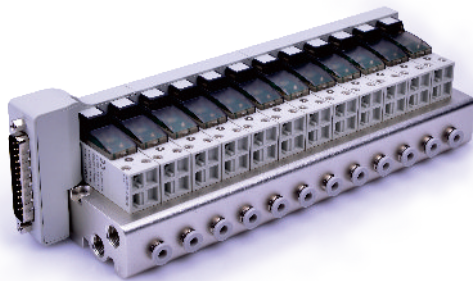


Integrated solenoid valve (3/2 way)

CPV15S Series



Product feature

1. Integrated installation centralizes air intake, exhaust and power(25pin D-Sub)to save space and reduce additional accessories.
 2. Flexible combination and expandability for various applications. Blank plates are optional.
 3. Equipped with manual override for quick air circuit checking.
 4. Low starting voltage and long service life.
- [Note1] G thread is available.

Specification

Model		CPV15SB	CPV15SF
Integrated solenoid valve	Fluid	Air(to be filtered by 40 μm filter element)	
	Acting	Direct acting	
	Number of stations	2 stations ~20 stations, only available in even stations	
	Electrical entry	Terminal, 25pin D-Sub	
	Port size	1/8" [Note1]	
		Φ4mm(Push in fittings)	
	The type of Inlet and exhaust	Centralized inlet and exhaust	
	Operating pressure	0.15~0.8MPa(21~114psi)	
Coil	Proof pressure	1.2MPa(175psi)	
	Temperature	-20~70℃	
	Protection	Dustproof	
	Standard voltage	DC24V	DC12V
	Scope of voltage	DC±10%	
	Temperature classification	F Class	
	Power consumption	DC: 1.6W	

Ordering code

CPV15S B 20F G

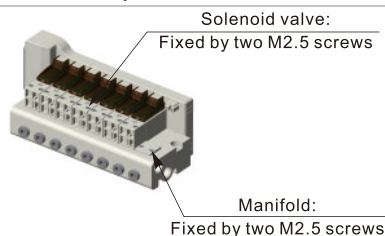
① ② ③ ④

① Model	② Voltage	③ Number of stations	④ Thread type
CPV15S: CPV15S series integrated solenoid valve	B: DC24V F: DC12V	2F: 2 stations 3F: 3stations 4F: 4stations 20F: 20stations	G: G

Installation and Application

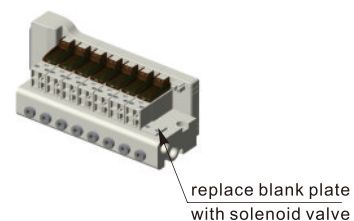
Assembly of micro-solenoid valve (blank plate) and manifold

Mount micro-solenoid valve and manifold by two M2.5 screws as following .
Mount blank plate and manifold by two M2.5 countersunk screws as following .



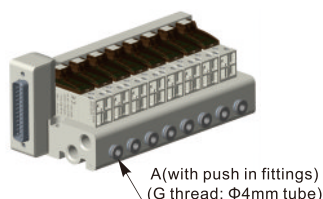
Expansion of micro-solenoid valve

Remove blank plate and install solenoid valve by the assembly instruction.



A port tubing

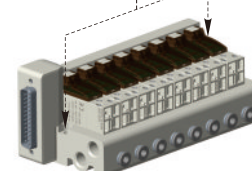
A port is at the side of manifold with push in fittings.



Manifold mounting

Both sides of manifold attach two installing through-holes, using two M4 hexagon cap screws to fix.

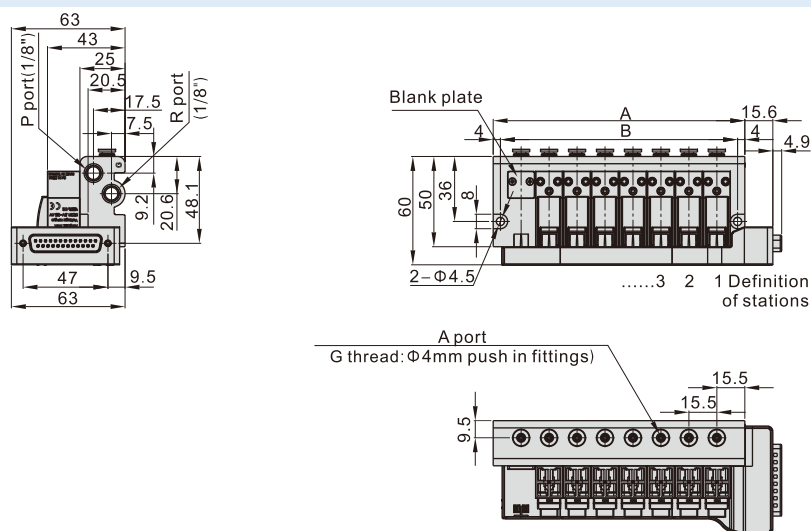
Installing through-holes
(using two M4 hexagon cap screws to fix)



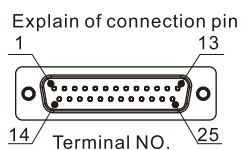
Integrated solenoid valve (3/2 way)

CPV15S Series

Dimensions



Item\Number of stations	2F	4F	6F	8F	10F	12F	14F	16F	18F	20F
A	46.5	77.5	108.5	139.5	170.5	201.5	232.5	263.5	294.5	325.5
B	38.5	69.5	100.5	131.5	162.5	193.5	224.5	255.5	286.5	317.5

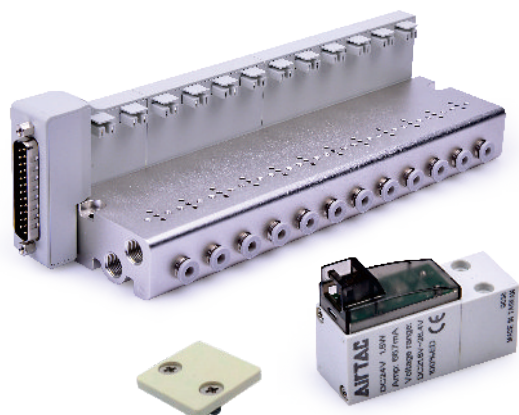


Terminal no.	Polarity		Control object	Terminal no.	Polarity		Control object
	-COM	+COM			-COM	+COM	
1	(+)	(-)	13 station	14	(+)	(-)	1 station
2	(+)	(-)	14 station	15	(+)	(-)	2 station
3	(+)	(-)	15 station	16	(+)	(-)	3 station
4	(+)	(-)	16 station	17	(+)	(-)	4 station
5	(+)	(-)	17 station	18	(+)	(-)	5 station
6	(+)	(-)	18 station	19	(+)	(-)	6 station
7	(+)	(-)	19 station	20	(+)	(-)	7 station
8	(+)	(-)	20 station	21	(+)	(-)	8 station
9			Void	22	(+)	(-)	9 station
10			Void	23	(+)	(-)	10 station
11			Void	24	(+)	(-)	11 station
12			Void	25	(+)	(-)	12 station
13	(-)	(+)	COM				

[Note] The D-sub cable of the corresponding Pin no. 13 (COM) should be less than or equal to 22AWG.

Integrated solenoid valve (3/2 way)

CPV15S Series——Manifold, solenoid valve and blank plate



Specification

Model		CPV15S
Fluid		Air(to be filtered by 40 μ m filter element)
Number of stations		2 stations ~20 stations, only available in even stations
Electrical entry		Terminal, 25pin D-Sub
Port size	P/R ports	1/8" [Note1]
	A Port	Φ4mm(Push in fittings)
The type of Inlet and exhaust		Centralized inlet and exhaust
Operating pressure		0.15~0.8MPa(21~114psi)
Proof pressure		1.2MPa(175psi)
Temperature		-20~70℃
Weight	Integrated valve of 2 stations	158.5g(not include CPV15 valve)
	Increase when add 2 satations	+97.65g
	Blank plate kits	0.65g

[Note1] G thread is available.

Product feature

1. Integrated installation centralizes air inlet, exhaust and power (25pin D-Sub)to save space and reduce additional accessories.
2. Flexible combination and expandability for various applications. Blank plates are optional.

Ordering code

Ordering code for manifold

CPV15S 20F G

①Model	②Number of stations	③Thread type
CPV15S: CPV15S series integrated olenoid valve	2F: 2 stations 4F: 4 stations 6F: 6 stations 20F: 20 stations	G: G

[Note] 1. Ordering code contains solenoid valve, manifold, and blank plate.
2. Maximum station up to 20 stations.

Ordering code for valve

CPV15 B P

①Model	②Voltage	③Code of manual override
CPV: CPV series micro-solenoid valve	B: DC24V F: DC12V	P: With manual override

Ordering code for blank plate

P-CPV15S-R2

①Model	②Code
CPV15S: CPV15S series integrated solenoid valve	R2: Blank plate for manifold

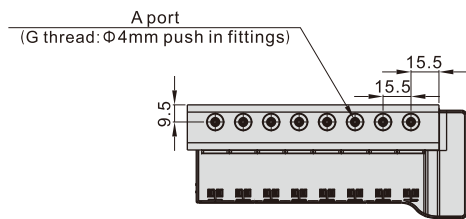
[Note] Blank plate kits contains blank plate, gasket and screw.

Installation and Application

Please refer to the "Installation and Application " instruction of Integrated solenoid valve.

AirTAC

Dimensions



Item\Number of stations	2F	4F	6F	8F	10F	12F	14F	16F	18F	20F
A	46.5	77.5	108.5	139.5	170.5	201.5	232.5	263.5	294.5	325.5
B	38.5	69.5	100.5	131.5	162.5	193.5	224.5	255.5	286.5	317.5